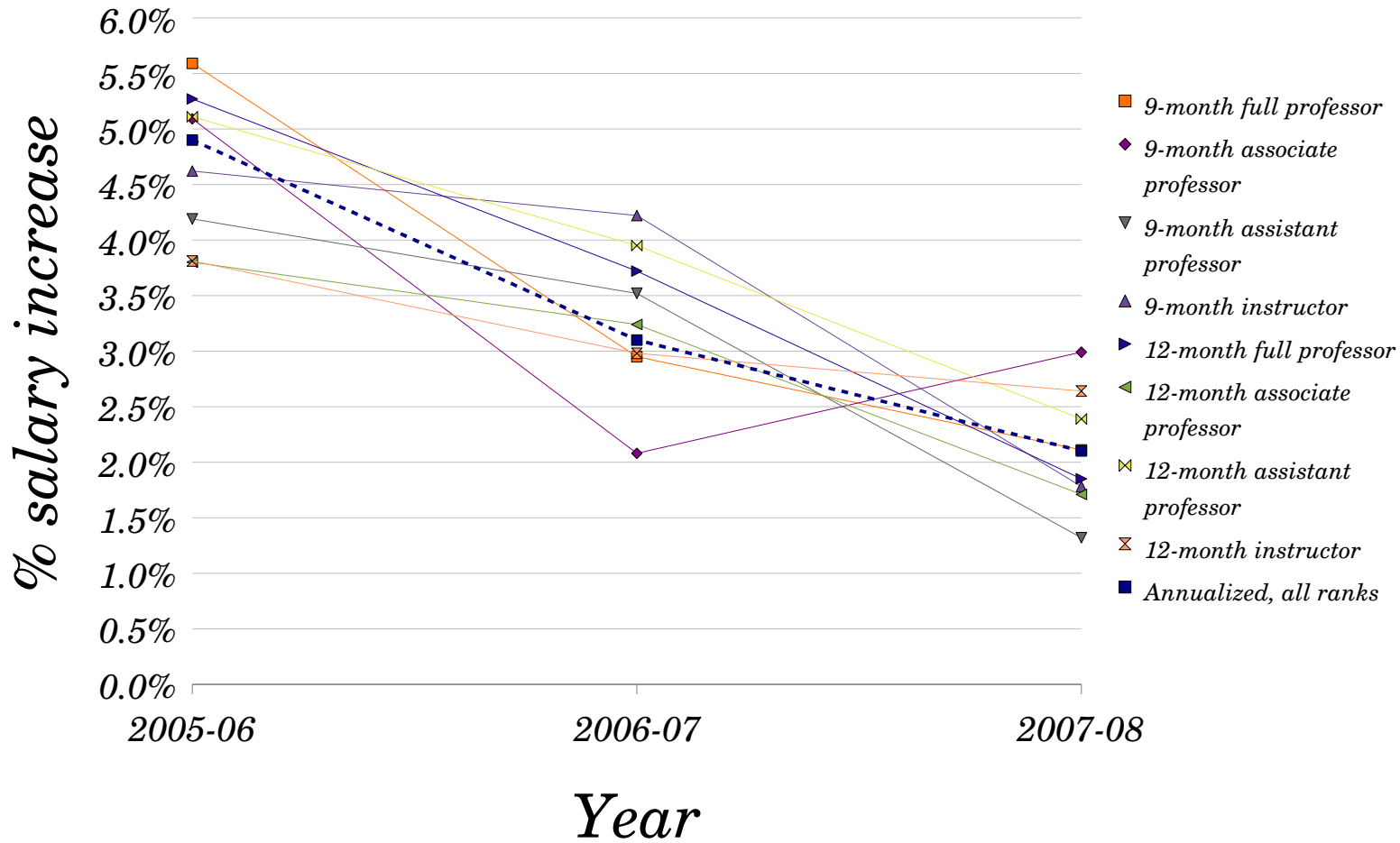


Slumping USF Faculty Raises, 2005-2008



Chart

Type of employee	2005-06		2006-07		2007-08	
	raises	N*	raises	N*	raises	N*
9-month full professor	5.6%	237	3.0%	231	2.1%	234
9-month associate profes	5.1%	251	2.1%	249	3.0%	237
9-month assistant profes	4.2%	231	3.5%	254	1.3%	267
9-month instructor	4.6%	89	4.2%	97	1.8%	102
12-month full professor	5.3%	69	3.7%	68	1.9%	74
12-month associate prof	3.8%	46	3.2%	42	1.7%	39
12-month assistant prof	5.1%	40	4.0%	48	2.4%	46
12-month instructor	3.8%	59	3.0%	62	2.6%	63
Annualized, all ranks	4.9%	1037	3.1%	1065	2.1%	1078

Source: USF response to AAUP Salary Surveys, at <http://www.ods.usf.edu/DSS/Resources/AAUP.asp>

* Continuing faculty from prior year; all-rank line includes lecturers